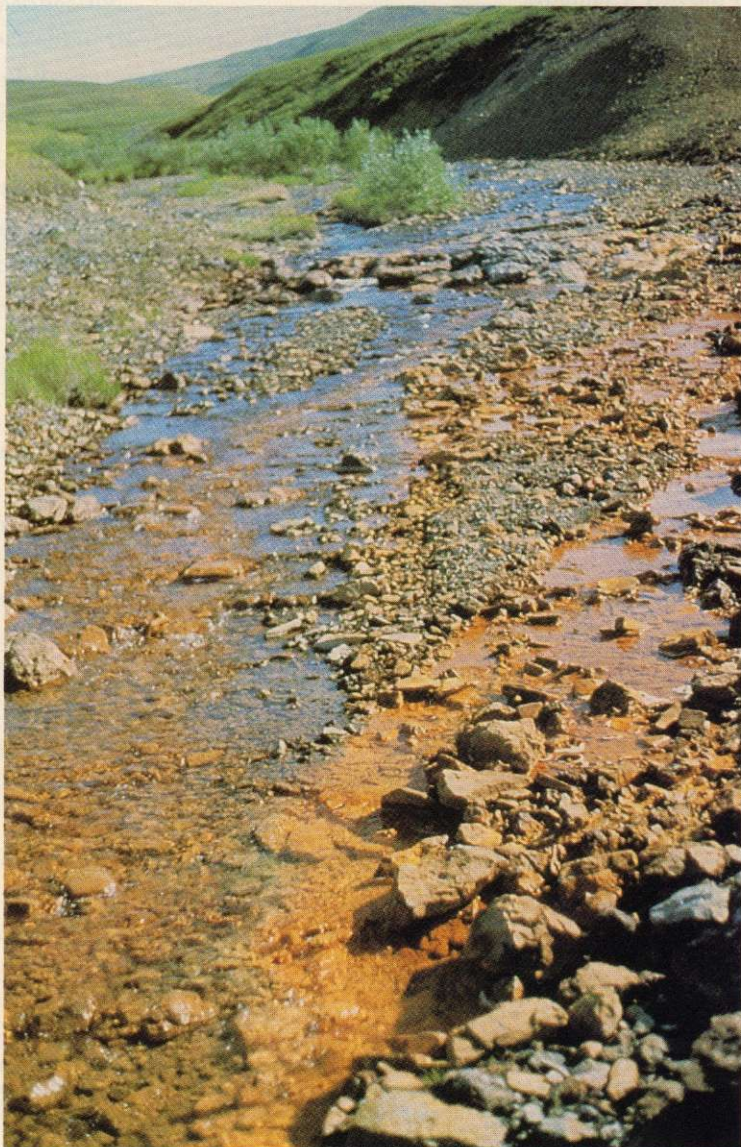


ECONOMIC GEOLOGY MONOGRAPH 8

Historical Perspectives of Genetic Concepts and Case Histories of Famous Discoveries

Papers Arising from SEG Symposia,
October 30 and 31, 1988,
Denver, Colorado

RICHARD W. HUTCHINSON AND RICHARD I. GRAUCH, EDITORS



Red Dog Creek, Alaska



Contents

Preface:

<i>Richard W. Hutchinson and Richard I. Grauch</i>	1
--	---

Genetic Concepts:

Concepts of the Genesis of Sulfide Nickel-Copper Deposits: A Historical Review	<i>Heikki Papunen</i>	3
Volcanic Sedimentary Rock-Related Metallogensis in the Kiruna-Skellefte Belt of Northern Sweden	<i>Tibor Parák</i>	20
Genetic Concepts for Iron-Formation and Associated Metalliferous Sediments	<i>Gordon A. Gross</i>	51
Understanding Volcanic Massive Sulfides—Past, Present, and Future	<i>R. L. Stanton</i>	82
A History of Theoretical Developments in Carbonate-Hosted Base Metal Deposits and a New Tri-Level Enthalpy Classification	<i>Michael J. Russell and Hilde Skauli</i>	96
The Evolution of Ideas about the Genesis of Stratiform Copper-Silver Deposits	<i>E. Craig Jowett</i>	117
The Changing View of Resource Availability	<i>John E. Tilton</i>	133
The Sources of Witwatersrand Gold and Uranium: A Continued Difference of Opinion	<i>D. A. Pretorius</i>	139
Auriferous Archean Greenstone-Sedimentary Belts	<i>R. W. Boyle</i>	164
Porphyry Copper Deposits	<i>John P. Hunt</i>	192
Model Development: Porphyry Molybdenum Deposits	<i>Stewart R. Wallace</i>	207
Evolution of Genetic Concepts for Principal Types of Sandstone Uranium Deposits in the United States	<i>Samuel S. Adams</i>	225
A Historical Perspective on the Nature and Genesis of Epithermal Gold-Silver Deposits	<i>Byron R. Berger</i>	249
The Economics of Gold—November 1988	<i>G. Milling-Stanley</i>	264
Case Histories:		
Red Dog, Alaska: Discovery and Definition of a Major Zinc-Lead-Silver Deposit	<i>George F. Koehler and George D. Tikkanen</i>	268
The Discovery of Serra dos Carajás	<i>J. F. Machamer, G. E. Tolbert, and R. L. L'Esperánce</i>	275
The Discovery of the Kambalda Nickel Deposits, Western Australia	<i>J. J. Gresham</i>	286
The Sleeper Gold-Silver Deposit: Discovery through Feasibility	<i>John D. Wood and Stanley K. Hamilton</i>	289
The Discovery of the La Escondida Orebody	<i>J. David Lowell</i>	300
A Case History of the Neves-Corvo Massive Sulfide Deposit, Portugal, and Implications for Future Discoveries	<i>Delfim de Carvalho</i>	314
A Case History of the Development of the Misima Gold-Silver Mine, Papua New Guinea	<i>G. I. Wilson and R. C. Barwick</i>	335
Anatomy of a Discovery: The McLaughlin Gold Mine, Napa, Yolo, and Lake Counties, California	<i>Donald L. Gustafson</i>	350